

ACMA Malta – How to find us

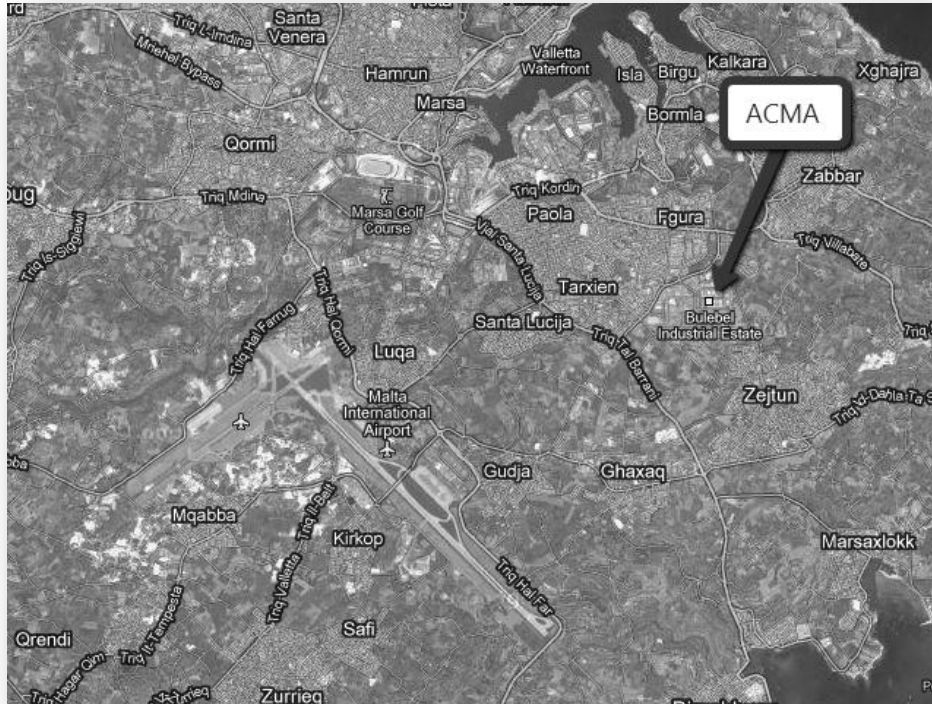
ACMA Factory is located at B10c Bulebel Industrial Estate Zejtun, in the southern part of Malta, not too far away from Malta International Airport.

The following images were taken from: maps.google.com

(<http://maps.google.com/?ie=UTF8&ll=35.864726,14.524763&spn=0.008921,0.01929&z=16>).

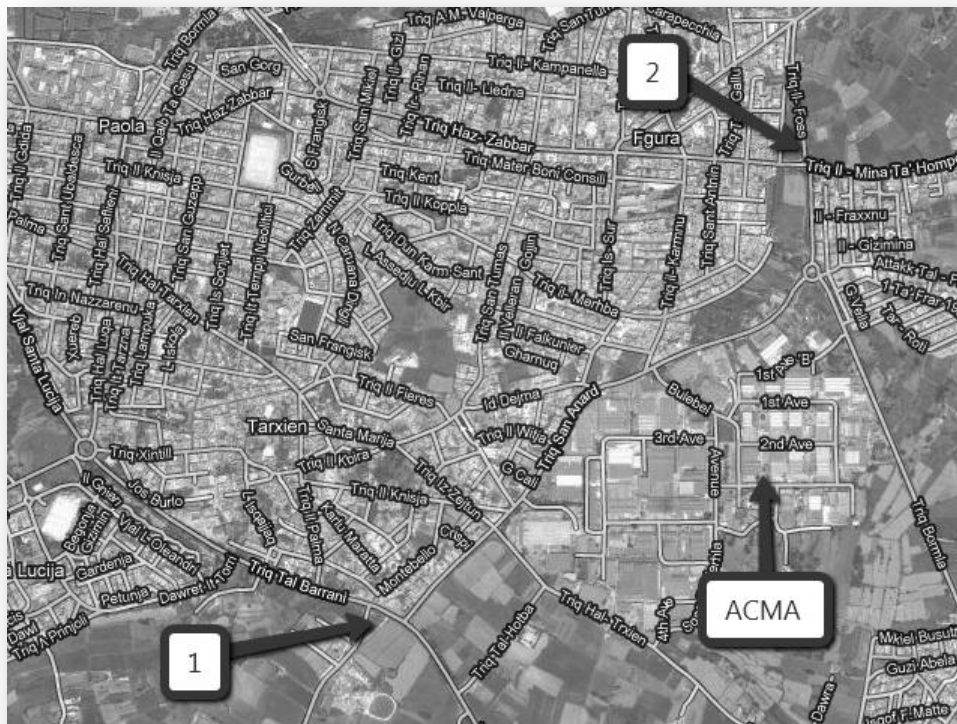


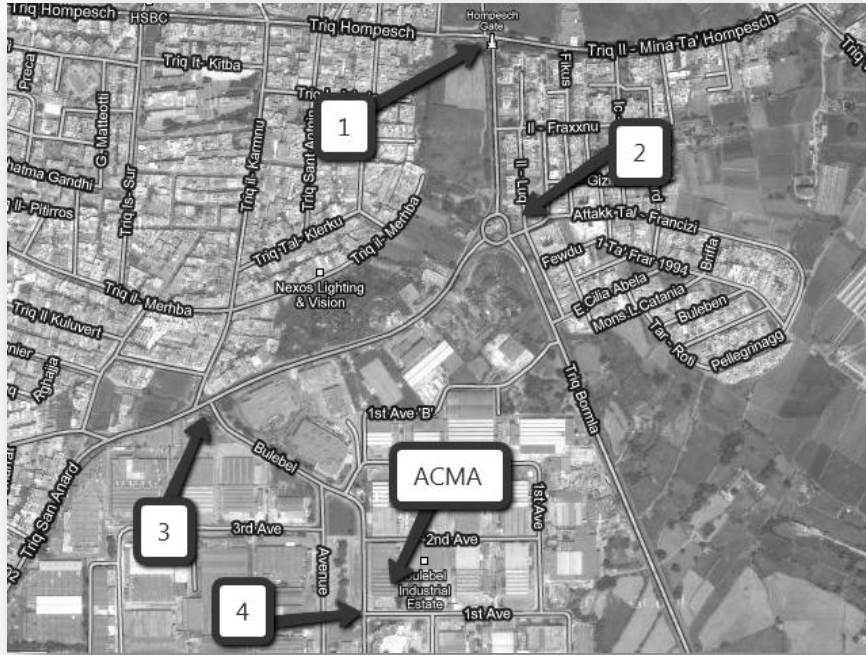
The Industrial zone of Bulebel is located between Zejtun and Tarxien as shown in the following map.



There are several ways how to reach depending on which part of the island you are coming from. The following map shows two landmarks:

1. Barrani Road Lights
2. Hompesch Gate





Please note that our factory is open between Monday to Friday from 730am till 430pm. Should you have any queries please do not hesitate to contact us.

Mailing Address	B10c Bulebel Industrial Estate, Zejtun ZTN08 Malta, Europe
Phone Numbers	+(356) 2180 3455 (Office hours 0800-1700 CET) +(356) 2169 2959 (Office hours 0800-1700 CET) +(356) 99422382
Fax Numbers	+(356) 2180 3253
Email Addresses	General: info@acmamalta.com Support: support@acmamalta.com